

# ENDURO

## 6 - 10kVA

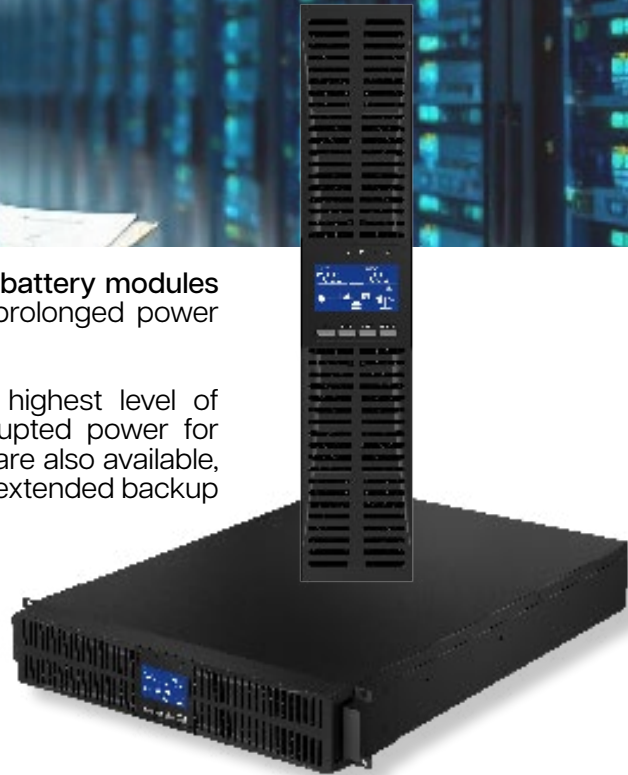


Designed with flexibility in mind, it allows you to add up to **4 extra battery modules (EBM)** to extend runtime, ensuring continuous operation during prolonged power outages.

Featuring **Double Online Conversion technology**, it offers the highest level of protection against power disturbances, ensuring clean, uninterrupted power for sensitive equipment. For more extended run times, **long-run units** are also available, making the Enduro Series a robust choice for businesses requiring extended backup power.



SCAN / CLICK  
FOR MORE DETAILS



Online Double Conversion



Rack/Tower Mount



SNMP/Relay Option

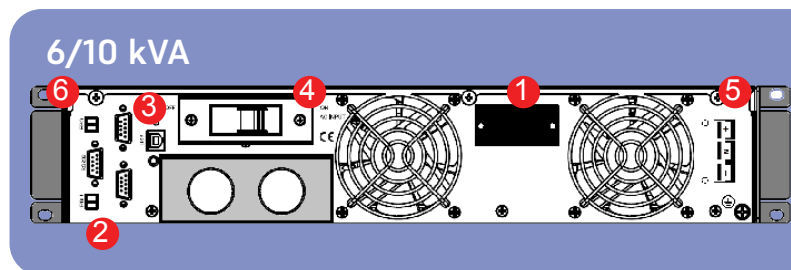
## RUNTIME IN MINUTES

	1000W/ 2000VA	2000W/ 2000VA	3000W/ 3000VA	4000W/ 4000VA	5000W/ 5000VA	5900W/ 5900VA	6500W/ 6500VA	6800W/ 6800VA	7400W/ 7400VA	7700W/ 7700VA	8000W/ 8000VA
EN6-1-RT-LL	47m	18m	9m	6m							
EN6-2-RT-LL	1h 54m	47m	27m	18m	12m						
EN6-3-RT-LL	3h 11m	1h 21m	47m	29m	24m						
EN6-4-RT-LL	4h 39m	1h 54m	1h 5m	47m	33m						
EN6-5-RT-LL	6h 24m	2h 34m	1h 35m	59m	47m						
EN10-1-RT-LL	59m	25m	13m	9m	6m						
EN10-2-RT-LL	2h 34m	59m	36m	25m	18m	13m	12m	11m	10m	9m	9m
EN10-3-RT-LL	4h 15m	1h 48m	59m	43m	29m	25m	22m	21m	18m	17m	15m
EN10-4-RT-LL	6h 24m	2h 34m	1h 35m	59m	47m	37m	30m	29m	27m	26m	25m
EN10-5-RT-LL	7h 59m	3h 22m	1h 58m	1h 27m	59m	50m	45m	42m	37m	34m	31m
EN10-6-RT-LL	9h 49m	4h 15m	2h 43m	1h 48m	1h 21m	59m	55m	53m	48m	46m	43m
EN10-7-RT-LL	12h 39m	5h 17m	3h 2m	2h 6m	1h 40m	1h 20m	1h 7m	1h	56m	54m	52m
EN10-8-RT-LL	14h 57m	6h 24m	3h 40m	2h 34m	1h 54m	1h 37m	1h 25m	1h 19m	1h 7m	1h 1m	59m
EN10-9-RT-LL	16h 45m	7h 17m	4h 15m	2h 55m	2h 12m	1h 49m	1h 39m	1h 34m	1h 23m	1h 18m	1h 13m
EN10-10-RT-LL	18h 11m	7h 59m	4h 54m	3h 22m	2h 34m	2h	1h 50m	1h 46m	1h 36m	1h 31m	1h 27m
EN10-48-T-LL	3h 11m	1h 21m	47m	29m	24m	18m	15m	14m	13m	12m	11m
EN10-96-T-LL	7h 43m	3h 11m	1h 54m	1h 21m	57m	48m	42m	40m	34m	31m	29m
EN10-80-20-T-LL	17h 6m	7h 14m	4h 1m	2h 46m	1h 56m	1h 39m	1h 28m	1h 22m	1h 10m	1h 5m	1h
EN10-120-20T-LL	21h 54m	10h 47m	6h 31m	4h 13m	3h 11m	2h 29m	2h 3m	1h 57m	1h 49m	1h 45m	1h 40m
EN10-120-40T-LL	107h 22m	21h 54m	15h 50m	10h 47m	7h 57m	6h 40m	5h 49m	5h 23m	4h 43m	4h 28m	4h 13m

In support of our policy of continuous product improvement, we reserve the right to change materials and specifications without notice. Drawings, where used, are not to scale. All dimensions provided are approximate. Where applicable, Safety Data Sheets (SDS) are made available on the website. All products should be installed and used in accordance with the manufacturer's instructions where provided, or otherwise in line with recognised industry best practice. Products may be the subject of registered designs and patents. Refer to the website for terms and conditions on warranty. To the maximum extent permitted by law, the manufacturer is not liable for damage resulting from misuse or reliance on this information. Some content on this datasheet may have been generated or enhanced using AI tools and has been reviewed by our technical team for accuracy and relevance.

## Rear Panel

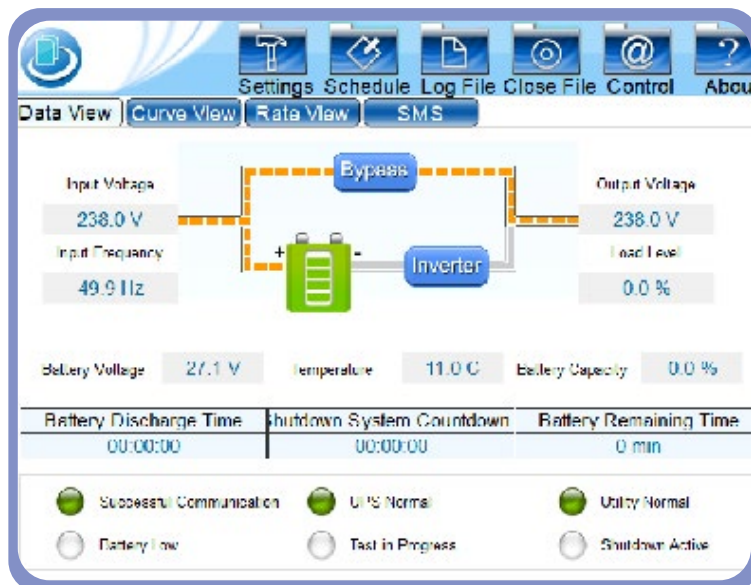
- 1 - Intelligent slot (SNMP card, dry contact etc.)
- 2 - USB port
- 3 - RS-232 port
- 4 - Input breaker
- 5 - Battery connector
- 6 - EPO



## UPS Smart Software

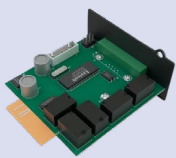
All Enduro units include UPS Smart software as a standard.

- USB connected for monitoring, notifying and logging parameter.
- SMS or Email alerts for power failure, battery life.




## Accessories

### Communication Accessories



**SW013**  
Relay card - trigger voltage free contacts to reflect UPS events and status.



**SW012**  
SNMP card - remote monitoring and access to UPS via assigned IP address.


### Recommended Accessories



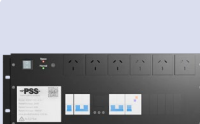
**EMBP25-1-R**  
Rackmount external manual interlocking bypass 25A/1ph



**EMBP40-1-R**  
2RU Rackmount external manual interlocking bypass 40A/1ph



**PAR-EN6/10KV5-40A**  
Parallel kit for EN6/10kV5 - Includes 40A rackmount bypass



**EMBPDIS-40A-1**  
External Manual Bypass/ATS with distribution. 40A, Single phase. Rack/wall mount

In support of our policy of continuous product improvement, we reserve the right to change materials and specifications without notice. Drawings, where used, are not to scale. All dimensions provided are approximate. Where applicable, Safety Data Sheets (SDS) are made available on the website. All products should be installed and used in accordance with the manufacturer's instructions where provided, or otherwise in line with recognised industry best practice. Products may be the subject of registered designs and patents. Refer to the website for terms and conditions on warranty. To the maximum extent permitted by law, the manufacturer is not liable for damage resulting from misuse or reliance on this information. Some content on this datasheet may have been generated or enhanced using AI tools and has been reviewed by our technical team for accuracy and relevance.

Model	EN6-1-RT	EN10-1-RT
Capacity	6000VA/6000W	10kVA/10000W
Display	LED and LCD	
Input		
Input Voltage	176-288V	
Input Powerfactor	≥ 0.99	
Frequency range	40-70Hz	
Short Circuit	Electronic and breaker	
Output		
Voltage regulation	230V +/-2% User settable	
Output sockets	Hardwired (L+N+E)	
Output Powerfactor	1	
Frequency	50Hz +/- 0.1Hz	
Waveform	Pure Sine Wave	
Transfer time	0 Seconds	
Battery		
Type	10-year-design-life Sealed Lead Acid	
Recharge Time	5 hours to 90%	
Communications and management		
Communication	USB - Options: SNMP or relay card	
Display Indication	LED and LCD -Load, battery, input, output, operating	
Software Supplied	UPS Smart	
DC start / Cold Start	YES	
Auto restart	YES	
Protection		
Surge protection	2200 Joules / 60,000 Amps	
Short circuit	Electronic and breaker	
Efficiency	≥94% normal mode, up to 98% ECO mode	
Safety Regulations	IEC /EN620240-1:2019 +A11:2021	
EMC Standards	IEC/EN 62040-2; IEC 61000-4-2,3,4,5,6&8	
Environment		
Audible noise	Less Than 55dB	Less Than 58dB
Temperature operating range	0 - 40 Degrees	
Humidity	0 - 95% (non-condensing)	
Physical		
Ventilation Requirements	100mm clearance front and rear	
Accessories Supplied	Feet & Rack ears   RK1000 required for rack mounting.	

In support of our policy of continuous product improvement, we reserve the right to change materials and specifications without notice. Drawings, where used, are not to scale. All dimensions provided are approximate. Where applicable, Safety Data Sheets (SDS) are made available on the website. All products should be installed and used in accordance with the manufacturer's instructions where provided, or otherwise in line with recognised industry best practice. Products may be the subject of registered designs and patents. Refer to the website for terms and conditions on warranty. To the maximum extent permitted by law, the manufacturer is not liable for damage resulting from misuse or reliance on this information. Some content on this datasheet may have been generated or enhanced using AI tools and has been reviewed by our technical team for accuracy and relevance.

SKU	Configuration	Battery Qty	UPS Dimensions (HxWxD) mm	Battery Bank(BB) Dimensions (HxWxD) mm	Total Weight
EN6-1-RT-LL	Enduro 6kVA UPS + 1 x BB	16 x 12V 9AH	89(2RU)x443x650 / 15kg	131(3RU)x443x580 / 50kg	65Kg
EN6-2-RT-LL	Enduro 6kVA UPS + 2 x BB	32 x 12V 9AH	89(2RU)x443x650 / 15kg	2x 131(3RU)x443x580 / 50kg	115Kg
EN6-3-RT-LL	Enduro 6kVA UPS + 3 x BB	48 x 12V 9AH	89(2RU)x443x650 / 15kg	3x 131(3RU)x443x580 / 50kg	165Kg
EN6-4-RT-LL	Enduro 6kVA UPS + 4 x BB	64 x 12V 9AH	89(2RU)x443x650 / 15kg	4x 131(3RU)x443x580 / 50kg	215Kg
EN6-5-RT-LL	Enduro 6kVA UPS + 5 x BB	80 x 12V 9AH	89(2RU)x443x650 / 15kg	5x 131(3RU)x443x580 / 50kg	265Kg
EN10-1-RT-LL	Enduro 10kVA UPS + 1 x BB	20 x 12V 9AH	89(2RU)x443x650 / 15kg	131(3RU)x443x580 / 59kg	74Kg
EN10-2-RT-LL	Enduro 10kVA UPS + 2 x BB	40 x 12V 9AH	89(2RU)x443x650 / 15kg	2 x 131(3RU)x443x580 / 59kg	133Kg
EN10-3-RT-LL	Enduro 10kVA UPS + 3 x BB	60 x 12V 9AH	89(2RU)x443x650 / 15kg	3 x 131(3RU)x443x580 / 59kg	192Kg
EN10-4-RT-LL	Enduro 10kVA UPS + 4 x BB	80 x 12V 9AH	89(2RU)x443x650 / 15kg	4 x 131(3RU)x443x580 / 59kg	251Kg
EN10-5-RT-LL	Enduro 10kVA UPS + 5 x BB	100 x 12V 9AH	89(2RU)x443x650 / 15kg	5 x 131(3RU)x443x580 / 59kg	310Kg
EN10-6-RT-LL	Enduro 10kVA UPS + 6 x BB	120 x 12V 9AH	89(2RU)x443x650 / 15kg	6 x 131(3RU)x443x580 / 59kg	369Kg
EN10-7-RT-LL	Enduro 10kVA UPS + 7 x BB	140 x 12V 9AH	89(2RU)x443x650 / 15kg	7 x 131(3RU)x443x580 / 59kg	428Kg
EN10-8-RT-LL	Enduro 10kVA UPS + 8 x BB	160 x 12V 9AH	89(2RU)x443x650 / 15kg	8 x 131(3RU)x443x580 / 59kg	487Kg
EN10-9-RT-LL	Enduro 10kVA UPS + 9 x BB	180 x 12V 9AH	89(2RU)x443x650 / 15kg	9 x 131(3RU)x443x580 / 59kg	546Kg
EN10-10-RT-LL	Enduro 10kVA UPS + 10 x BB	200 x 12V 9AH	89(2RU)x443x650 / 15kg	10 x 131(3RU)x443x580 / 59kg	605Kg
EN10-48-T-LL	Enduro 10kVA UPS + 1 x BB	48 x 12V 9AH	89(2RU)x443x650 / 15kg	700x230x635 / 145.2Kg	160.2Kg
EN10-96-T-LL	Enduro 10kVA UPS + 2 x BB	96 x 12V 9AH	89(2RU)x443x650 / 15kg	700x470x635 / 290.40kg	305.4Kg
EN10-80-20-T-LL	Enduro 10kVA UPS + 1 x BB	20 x 12V 80AH	89(2RU)x443x650 / 15kg	1520x470x780 / 480kg	495Kg
EN10-120-20T-LL	Enduro 10kVA UPS + 1 x BB	20 x 12V 120AH	89(2RU)x443x650 / 15kg	1520x470x780 / 680kg	695Kg
EN10-120-40T-LL	Enduro 10kVA UPS + 2 x BB	40 x 12V 120AH	89(2RU)x443x650 / 15kg	1520x950x780 / 1360kg	1375Kg

\*BB = External Battery Bank

\*LL = Long-Life batteries (10-year-design-life Sealed Lead Acid)

In support of our policy of continuous product improvement, we reserve the right to change materials and specifications without notice. Drawings, where used, are not to scale. All dimensions provided are approximate. Where applicable, Safety Data Sheets (SDS) are made available on the website. All products should be installed and used in accordance with the manufacturer's instructions where provided, or otherwise in line with recognised industry best practice. Products may be the subject of registered designs and patents. Refer to the website for terms and conditions on warranty. To the maximum extent permitted by law, the manufacturer is not liable for damage resulting from misuse or reliance on this information. Some content on this datasheet may have been generated or enhanced using AI tools and has been reviewed by our technical team for accuracy and relevance.